



SIMON

we create fire safety



SMOKE AND HEAT
VENTILATION



SMOKE AND
FIRE CURTAINS



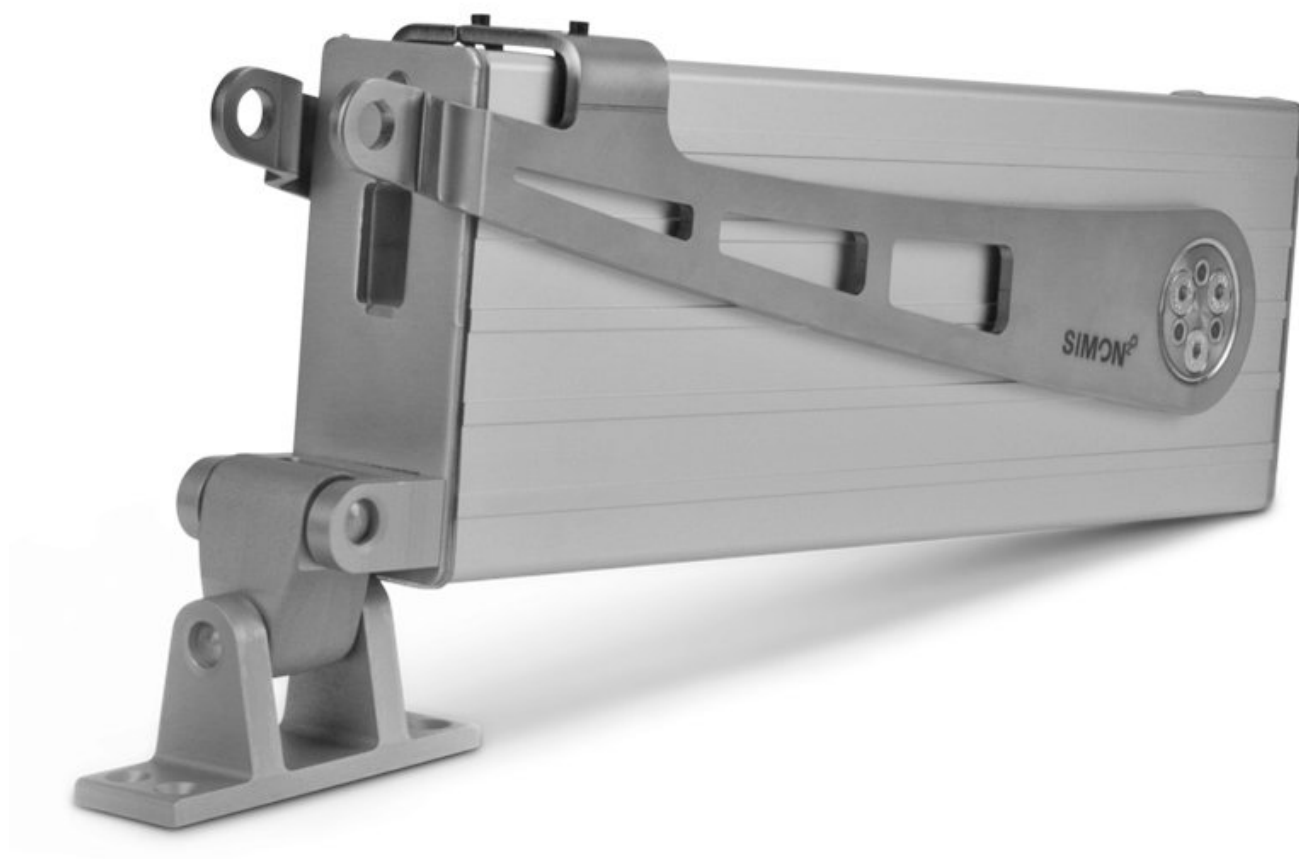
NATURAL
VENTILATION

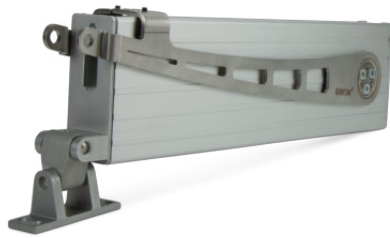
SIMON PROtec Catalogue

Version: 12.08.2021

SIMON
we create fire safety





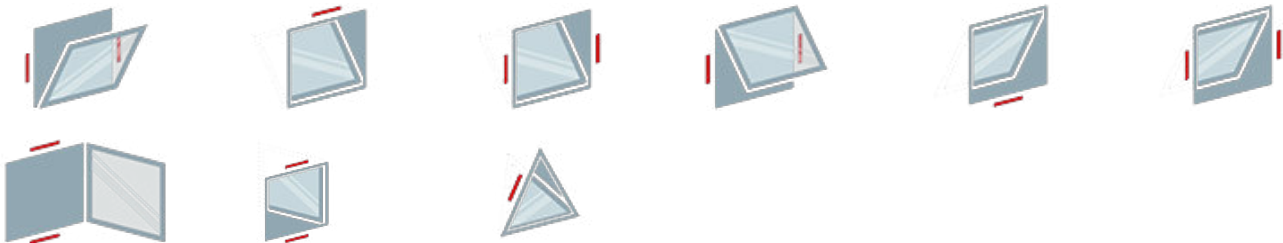


Technical Data



Input voltage	24 V DC
Nominal current	2.0 A / 2.6 A / 3.0 A
Stroke lengths	530, 710, 960, 1200 mm
Max. Pull & Push Force	500 N / 750 N / 800 N / 1000 N
Running speed	ca. 14 mm/s
IP Code	IP 54 / IP 65 on request
Switch on duration	30

MOUNTING POSITIONS



TECHNICAL DATA

Matchcode	PA-KL2
Product name	Folding Arm ² PA-KL ²
Features	3 Jahre Garantie SICO Synchro RWA VENT Eingang 24 VDC NRWG tauglich
Input voltage	24 V DC
Nominal current	2.0 A / 2.6 A / 3.0 A
Input voltage range	- 15 % / + 25 %
Ripple	500
Stroke lengths	530, 710, 960, 1200 mm
Max. Pull & Push Force	500 N / 750 N / 800 N / 1000 N
Cut-Off	Integrated cut-off with microprocessor
Running speed	ca. 14 mm/s
IP Code	IP 54 / IP 65 on request
Switch on duration	30
Environment temperature range	- 5 °C to + 70 °C
Weight	approx. 5.5 kg
Mounting way	aufgesetzt
Housing	Aluminium housing E6 / EV1 anodized
Connections	SICO PLUG connection. Excluding connection cable / set.

ARTICLE LIST

Stroke 530 mm

Part no.	Matchcode
M2 2006	PA-KL²-K-50/530
M2 2006 S	PA-KL²-K-50/530-S
M2 2007	PA-KL²-K-80/530
M2 2007 S	PA-KL²-K-80/530-S

Stroke 710 mm

Part no.	Matchcode
M2 2001	PA-KL²-50/710
M2 2001 S	PA-KL²-50/710-S
M2 2002	PA-KL²-80/710
M2 2002 S	PA-KL²-80/710-S
M2 2003	PA-KL²-100/710
M2 2003 S	PA-KL²-100/710-S

Stroke 960 mm

Part no.	Matchcode
M2 2004	PA-KL²-M-75/960
M2 2004 S	PA-KL²-M-75/960-S

Stroke 1200 mm

Part no.	Matchcode
M2 2005	PA-KL²-L-55/1200
M2 2005 S	PA-KL²-L-55/1200-S



Technical Data



Input voltage	24 V DC
Nominal current	1.2 A - 3.0 A
Opening angle	122
Max. Pull & Push Force	300 N / 500 N / 800 N
Running speed	ca. 2 °/s
IP Code	IP54
Switch on duration	30

MOUNTING POSITIONS



TECHNICAL DATA

Matchcode	PA-KL2-T
Product name	Folding Arm ² PA-KL ² -T door opener
Features	3 Jahre Garantie SICO RWA VENT Eingang 24 VDC NRWG tauglich
Input voltage	24 V DC
Nominal current	1.2 A - 3.0 A
Input voltage range	- 15 % / + 25 %
Ripple	500
Opening angle	122
Max. Pull & Push Force	300 N / 500 N / 800 N
Cut-Off	Integrated overload cut-off with microprocessor
Running speed	ca. 2 °/s
IP Code	IP54
Switch on duration	30
Environment temperature range	0 °C - +75 °C
Weight	approx. 5 kg
Mounting way	aufgesetzt
Housing	Aluminium housing E6 / EV1 anodized
Connections	SICO PLUG connection. Excluding connection cable / set.

ARTICLE LIST

Part no.	Matchcode
M2 2020	PA-KL²-T-30/122deg
M2 2021	PA-KL²-T-50/122deg
M2 2022	PA-KL²-T-80/122deg
M2 2023	PA-KL²-T-K-50/122deg



Technical Data



Input voltage	24 V DC
Nominal current	1.1 A / 1.5 A
Opening angle	140
Max. Pull & Push Force	500 N
Running speed	ca. 3°/s
IP Code	IP 54
Switch on duration	30

MOUNTING POSITIONS



TECHNICAL DATA

Matchcode	PA-KL2-DF
Product name	Folding Arm ² PA-KL ² -DF rotary wing
Features	3 Jahre Garantie SICO Synchro RWA VENT Eingang 24 VDC NRWG tauglich
Input voltage	24 V DC
Nominal current	1.1 A / 1.5 A
Input voltage range	- 15 % / + 15 %
Ripple	500
Opening angle	140
Max. Pull & Push Force	500 N
Cut-Off	Integrated overload cut-off with microprocessor
Running speed	ca. 3°/s
IP Code	IP 54
Switch on duration	30
Environment temperature range	0 °C to +70 °C
Weight	approx. 4 kg
Mounting way	aufgesetzt
Housing	Aluminium housing E6 / EV1 anodized
Connections	SICO PLUG connection. Excluding connection cable / set.

ARTICLE LIST

Part no.	Matchcode
M2 2024	PA-KL²-DF-50/140deg
M2 2024 S	PA-KL²-DF-50/140deg-S
M2 2025	PA-KL²-DF-K-50/140deg
M2 2025 S	PA-KL²-DF-K-50/140deg-S



Technical Data



TECHNICAL DATA

Matchcode	Zubehör Klapparm ²
Product name	Accessories Folding arm ²
Features	RWA VENT

ARTICLE LIST

Part no.	Matchcode
S2 1050	Z-KL²-IP65
S2 1050 A	Z-KL²-BWS

Accessories Folding arm² EA-KL² / PA-KL²

Part no.	Matchcode
K2 1608	K-KL²-M-OK
K2 1609	K-KL²-S-OK
K2 1610	K-KL²-M
K2 1611	K-KL²-I
K2 1612	K-KL²-S
K2 1613	K-KL²-M(S)-AW57RO
K2 1616	K-KL²-M(S)-RAICO105D
K2 1617	Z-K-KL-DP25
K2 1623	K-KL²-M(S)-RAICO100/120RI
K2 1624	K-KL²-WICONA-LI
K2 1625	K-KL²-WICONA-RE
K2 1628	K-KL²-M3D
K2 1647	K-KL²-L-WICONA-LI
K2 1648	K-KL²-L-WICONA-RE
K2 1649	K-KL²-L-RAICO105D-LI
K2 1650	K-KL²-L-RAICO105D-RE
K2 1651	K-KL²-L-LK-LI

K2 1652	K-KL²-L-LK-RE
K2 1653	K-KL²-L-AWS57RO-LI
K2 1654	K-KL²-L-AWS57RO-RE
K2 1680	Z-K-KL2-DP5
K2 1681	Z-K-KL2-DP10
K2 1682	Z-K-KL2-DP17
K2 1683	Z-K-KL2-DP22

Accessories Folding arm² Turning actuator EA-KL²-DF / PA-KL²-DF

Part no.	Matchcode
K2 1695	K-KL²-DF-800
K2 1696	K-KL²-DF-600
K2 1697	K-KL²-DF-400

Accessories Folding arm² Door opener EA-KL²-T / PA-KL²-T

Part no.	Matchcode
K2 1620	K-KL²-T-MW
K2 1621	K-KL²-T-MP
K2 1660	K-KL²-T-80-MW



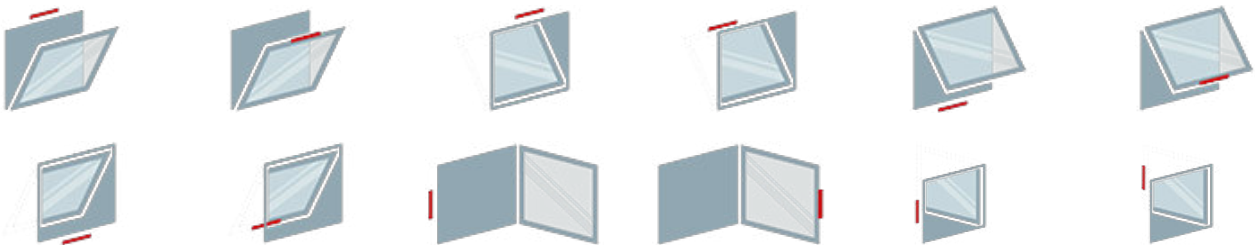


Technical Data



Input voltage	24 V DC
Nominal current	1 A
Stroke lengths	400 mm, 600 mm, 800 mm, 1000 mm, 1200 mm
Max. Pull & Push Force	300 N / 400 N
Running speed	9.7 mm/s
IP Code	IP32
Switch on duration	30

MOUNTING POSITIONS



TECHNICAL DATA

Matchcode	EA-K-30
Product name	Chain actuator EA-K-30
Features	3 Jahre Garantie Simon Link Tandem RWA VENT Eingang 24 VDC NRWG tauglich
Input voltage	24 V DC
Nominal current	1 A
Input voltage range	- 15 % / + 15 %
Stroke lengths	400 mm, 600 mm, 800 mm, 1000 mm, 1200 mm
Max. Pull & Push Force	300 N / 400 N
Cut-Off	integrated electronic overload cut-off
Running speed	9.7 mm/s
IP Code	IP32
Switch on duration	30
Environment temperature range	-5 °C - 75 °C
Weight	approx. 2 kg
Mounting way	aufgesetzt
Housing	aluminium profile housing EV1 anodized (optional: coating according to RAL or DB, on request)
Connections	silicone connection cable 5 x 0,75 mm ² (length 3,000 mm)

ARTICLE LIST

Part no.	Matchcode
M2 5315	EA-K-30/400-T
M2 5315 DA	EA-K-30/400-T-DA
M2 5316	EA-K-30/600-T
M2 5316 DA	EA-K-30/600-T-DA
M2 5317	EA-K-30/800-T
M2 5317 DA	EA-K-30/800-T-DA
M2 5318	EA-K-30/1000-T
M2 5318 DA	EA-K-30/1000-T-DA
M2 5319	EA-K-30/1200-T
M2 5319 DA	EA-K-30/1200-T-DA

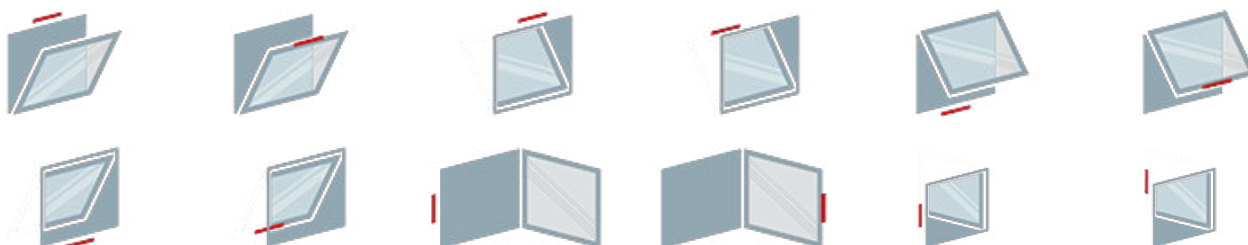


Technical Data



Input voltage	24 V DC
Nominal current	1.4 A
Stroke lengths	300 / 600 / 750 / 1000 / 1200 mm
Max. Pull & Push Force	500 N
Running speed	11 mm/s
IP Code	IP32
Switch on duration	30

MOUNTING POSITIONS



TECHNICAL DATA

Matchcode	EA-K-50
Product name	Chain actuator EA-K-50
Features	3 Jahre Garantie Simon Link Tandem RWA VENT Eingang 24 VDC NRWG tauglich
Input voltage	24 V DC
Nominal current	1.4 A
Input voltage range	- 15 % / + 15 %
Stroke lengths	300 / 600 / 750 / 1000 / 1200 mm
Max. Pull & Push Force	500 N
Cut-Off	integrated, electronic overload cut-off
Running speed	11 mm/s
IP Code	IP32
Switch on duration	30
Environment temperature range	-5 °C - 75 °C
Weight	approx. 2.5 kg
Mounting way	aufgesetzt
Housing	aluminium profile housing EV1 anodized (optional: coating according to RAL or DB, on request)
Connections	Silicone connection cable; Standard 3 x 0.75 mm ² (length 3,000 mm); Tandem actuator: 6 x 0.75

mm² (length 3,000 mm)

ARTICLE LIST

Part no.	Matchcode	
M2 5309	EA-K-50/300	
M2 5309 T	EA-K-50/300-T	
M2 5311	EA-K-50/600	
M2 5311 T	EA-K-50/600-T	
M2 5312	EA-K-50/750	
M2 5312 T	EA-K-50/750-T	
M2 5313	EA-K-50/1000	
M2 5313 T	EA-K-50/1000-T	
M2 5314	EA-K-50/1200	
M2 5314 T	EA-K-50/1200-T	

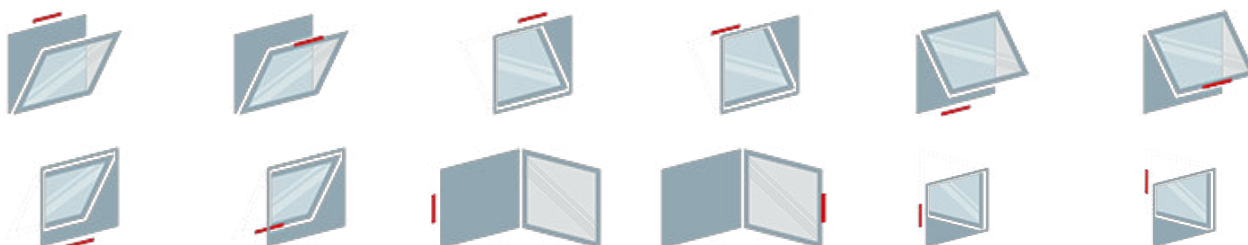


Technical Data



Input voltage	24 V DC
Nominal current	1.9 A
Stroke lengths	300 mm, 600 mm, 1200 mm
Max. Pull & Push Force	650 N
Running speed	13.7 mm/s / 23 mm/s
IP Code	IP32
Switch on duration	30

MOUNTING POSITIONS



TECHNICAL DATA

Matchcode	EA-K-65
Product name	Chain actuator EA-K-65
Features	3 Jahre Garantie Simon Link Tandem RWA VENT Eingang 24 VDC
Input voltage	24 V DC
Nominal current	1.9 A
Input voltage range	- 15 % / + 15 %
Stroke lengths	300 mm, 600 mm, 1200 mm
Max. Pull & Push Force	650 N
Cut-Off	Integrated electronic overload cut-off
Running speed	13.7 mm/s / 23 mm/s
IP Code	IP32
Switch on duration	30
Environment temperature range	-5 °C - 75 °C
Weight	approx. 2.5 kg
Mounting way	aufgesetzt
Housing	Aluminum profile housing EV1 anodized (optional: coating according to RAL or DB, on request)
Connections	Silicone connection cable Standard 3 x 0.75 mm ² (length 3,000 mm), Tandem version 6 x 0.75 mm ² (length 3,000 mm)

ARTICLE LIST

Part no.	Matchcode
M2 5325	EA-K-65/300
M2 5325 T	EA-K-65/300-T
M2 5326	EA-K-65/600
M2 5326 T	EA-K-65/600-T

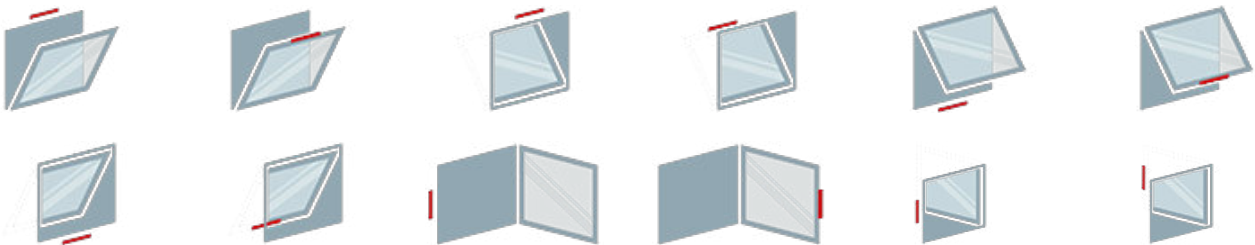


Technical Data



Input voltage	230 V AC
Nominal current	0.23 A
Stroke lengths	300 mm, 600 mm, 800 mm, 1000 mm
Max. Pull & Push Force	300 N
Running speed	9.7 mm/s
IP Code	IP32
Switch on duration	30

MOUNTING POSITIONS



TECHNICAL DATA

Matchcode	EA230-K-30
Product name	Chain actuator EA230-K-30
Features	Synchro RWA VENT Eingang 230 VAC
Input voltage	230 V AC
Nominal current	0.23 A
Input voltage range	- 10 % / + 10 %
Stroke lengths	300 mm, 600 mm, 800 mm, 1000 mm
Max. Pull & Push Force	300 N
Cut-Off	integrated electronic overload cut-off
Running speed	9.7 mm/s
IP Code	IP32
Switch on duration	30
Environment temperature range	0 °C - 75 °C
Weight	approx. 2 kg
Mounting way	aufgesetzt
Housing	aluminium profile housing EV1 anodized (optional: coating according to RAL or DB, on request)
Connections	plastic connection cable 3 x 0.5 mm ² , white, length 2,000 mm / synchronous version: plastic connection cable 5 x 0.5 mm ² , length 2,500 mm

ARTICLE LIST

Part no.	Matchcode
M2 5140	EA230-K-30/300
M2 5141	EA230-K-30/600
M2 5142	EA230-K-30/800
M2 5143	EA230-K-30/1000
M2 5144	EA230-K-30/300-S
M2 5145	EA230-K-30/600-S
M2 5146	EA230-K-30/800-S
M2 5147	EA230-K-30/1000-S

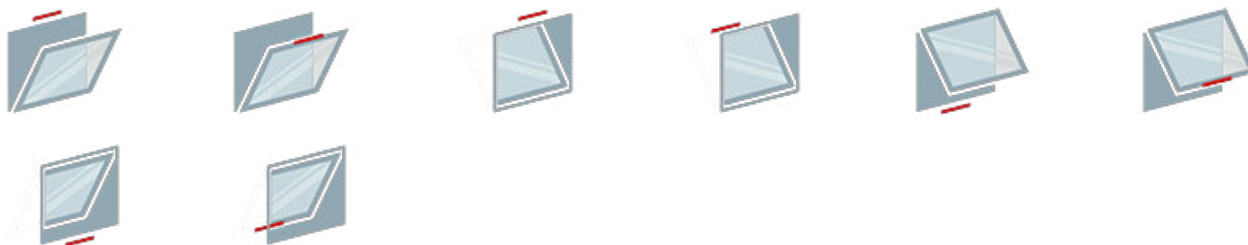


Technical Data



Input voltage	230 V AC
Nominal current	0.15 A
Stroke lengths	300 mm, 600 mm, 750 mm, 1000 mm
Max. Pull & Push Force	500 N
Running speed	11 mm/s
IP Code	IP32
Switch on duration	30

MOUNTING POSITIONS



TECHNICAL DATA

Matchcode	EA230-K-50
Product name	Chain actuator EA230-K-50
Features	3 Jahre Garantie Simon Link RWA VENT Eingang 230 VAC
Input voltage	230 V AC
Nominal current	0.15 A
Input voltage range	- 10 % / + 10 %
Stroke lengths	300 mm, 600 mm, 750 mm, 1000 mm
Max. Pull & Push Force	500 N
Cut-Off	integrated electronic load cut-off
Running speed	11 mm/s
IP Code	IP32
Switch on duration	30
Environment temperature range	-5 °C - 75 °C
Weight	2.12 kg/2.54 kg/2.76 kg/3.12 kg
Mounting way	aufgesetzt
Housing	aluminium profile housing E6/EV1 anodized, dimensions (LxWxH) 546/696/771/896 x 50 x 41 mm
Connections	plastic connection cable 5 x 0.75 mm ² , length 3 m

ARTICLE LIST

Part no.	Matchcode
M2 5150	EA230-K-50/300
M2 5151	EA230-K-50/600
M2 5152	EA230-K-50/750
M2 5153	EA230-K-50/1000

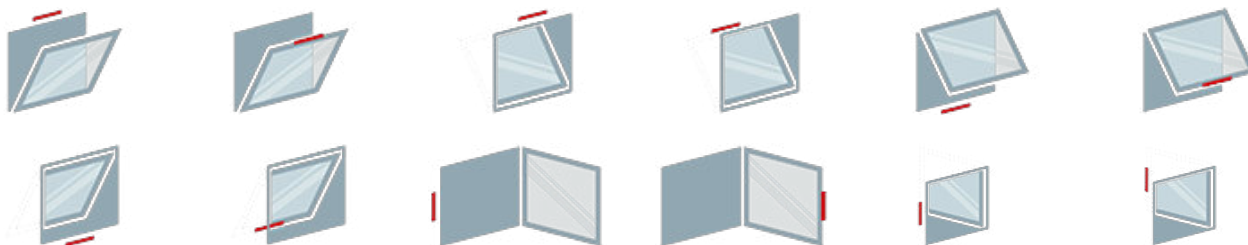


Technical Data



Input voltage	230 V AC
Nominal current	0.2 A
Stroke lengths	110 mm, 200 mm, 300 mm, 400 mm
Max. Pull & Push Force	300 N
Running speed	12.5 mm/s
IP Code	IP20
Switch on duration	30

MOUNTING POSITIONS



TECHNICAL DATA

Matchcode	EA-KN-230/300/400
Product name	Chain actuator EA-KN-230/300/400
Features	Synchro VENT Eingang 230 VAC
Input voltage	230 V AC
Nominal current	0.2 A
Stroke lengths	110 mm, 200 mm, 300 mm, 400 mm
Max. Pull & Push Force	300 N
Cut-Off	integrated, electronic overload cut-off
Running speed	12.5 mm/s
IP Code	IP20
Switch on duration	30
Environment temperature range	-5 °C - 65 °C
Weight	1.0
Mounting way	aufgesetzt
Housing	plastics, similar RAL 9006
Connections	Plastic cable, white, length 2,000 mm

ARTICLE LIST

Part no.	Matchcode	
M2 5113	EA-KN-230/300/400	



Technical Data



Input voltage	24 V DC
Nominal current	0.32 A
Stroke lengths	70 mm, 125 mm, 170 mm, 210 mm
Max. Pull & Push Force	150 N
Running speed	8 mm/s
IP Code	IP32
Switch on duration	30

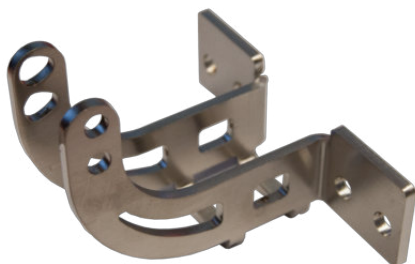
TECHNICAL DATA

Matchcode	EA-KN-20-XS
Product name	Chain actuator EA-KN-20-XS
Features	RWA VENT Eingang 24 VDC
Input voltage	24 V DC
Nominal current	0.32 A
Stroke lengths	70 mm, 125 mm, 170 mm, 210 mm
Max. Pull & Push Force	150 N
Cut-Off	Integrated electronic load cut-off
Running speed	8 mm/s
IP Code	IP32
Switch on duration	30
Environment temperature range	-5 °C - 65 °C
Weight	approx. 0.72 kg
Mounting way	integriert
Housing	aluminium profile housing EV1 anodized
Connections	silicon connection cable 2000 mm

ARTICLE LIST

Part no.	Matchcode
M2_5030	EA-KN-20-XS

Technical Data



TECHNICAL DATA

Matchcode	Zubehör Kettenantrieb
Product name	Accessories chain actuator
Features	RWA VENT

ARTICLE LIST

Accessories EA(230)-K-30 / EA(230)-K-50 / EA-K-65

Part no.	Matchcode
K2 5089	K-K50-OK
K2 5106	K-K-OK-SK

Accessories EA(230)-K-30

Part no.	Matchcode
K2 5097	K-K30-A
K2 5098	K-K30-K
K2 5104	K-K30-FLEX
K2 5105	K-K30-AKI

Accessories EA(230)-K-50

Part no.	Matchcode
K2 5088	K-K50-SKI
K2 5090	K-K50-AKI
K2 5092	K-K50-A-(M5)
K2 5093	K-K50-K-(M5)
K2 5094	K-K50-FLEX (M5)





Technical Data



Input voltage	24 V DC
Nominal current	1 A
Stroke lengths	500 mm, 750 mm, 1000 mm
Max. Pull & Push Force	300 N
Running speed	17 mm/s
IP Code	IP32
Switch on duration	30

TECHNICAL DATA

Matchcode	EA-L-30/xxx-T
Product name	Linear actuator EA-L-30
Features	3 Jahre Garantie Simon Link Tandem RWA VENT Eingang 24 VDC
Input voltage	24 V DC
Nominal current	1 A
Input voltage range	- 15 % / + 15 %
Stroke lengths	500 mm, 750 mm, 1000 mm
Max. Pull & Push Force	300 N
Cut-Off	Integrated electronic overload cut-off and potential switch-over "F", electronic limit cut-off, optional synchronization cut-off, integrated safety cut-off
Running speed	17 mm/s
IP Code	IP32
Switch on duration	30
Environment temperature range	0 °C - 75 °C
Weight	approx. 3 kg
Mounting way	aufgesetzt
Housing	aluminium tube, anodized E6/EV1 with integrated fixing point for flexible bracket system, length: 336 mm + stroke + 21 mm (cable gland)
Connections	silicone cable 5 x 0.75 mm ² , light grey, length 3,000 mm

ARTICLE LIST

Part no.	Matchcode
M2 1780 T	EA-L-30/500-T
M2 1782 T	EA-L-30/750-T
M2 1784 T	EA-L-30/1000-T



Technical Data



Input voltage	24 V DC
Nominal current	0.95 A / 1.2 A / Sondermotor 450 N: 0.5 A
Stroke lengths	300 mm, 500 mm, 750 mm, 1000 mm
Max. Pull & Push Force	450 N, 500 N, 750 N, 1000 N
Running speed	5 mm/s, 8 mm/s, 7.2 mm/s, 4.6 mm/s
IP Code	IP54
Switch on duration	30

TECHNICAL DATA

Matchcode	EA-L
Product name	Linear actuator EA-L
Features	3 Jahre Garantie Synchro RWA VENT Eingang 24 VDC NRWG tauglich
Input voltage	24 V DC
Nominal current	0.95 A / 1.2 A / Sondermotor 450 N: 0.5 A
Input voltage range	- 15 % / + 15 %
Stroke lengths	300 mm, 500 mm, 750 mm, 1000 mm
Max. Pull & Push Force	450 N, 500 N, 750 N, 1000 N
Cut-Off	Integrated electronic load switch-off and potential switch-over "F", electronic limit switch-off, optional synchronization switch-off, integrated safety switch-off, up to 4 parallel linear actuators
Running speed	5 mm/s, 8 mm/s, 7.2 mm/s, 4.6 mm/s
IP Code	IP54
Switch on duration	30
Environment temperature range	-5 °C - 75 °C
Weight	1.45 kg - 3.55 kg
Mounting way	aufgesetzt
Housing	persistent aluminium special section tube, anodized E6/EV1 with integrated fixing point for flexible bracket system, length: 336 mm + stroke + 21 mm (screwed cable gland)
Connections	silicon cable 3 x 0,75 mm ² , light grey (5 x 0,75 mm ² for synchro version) The length of the connection cable is 3000 mm.

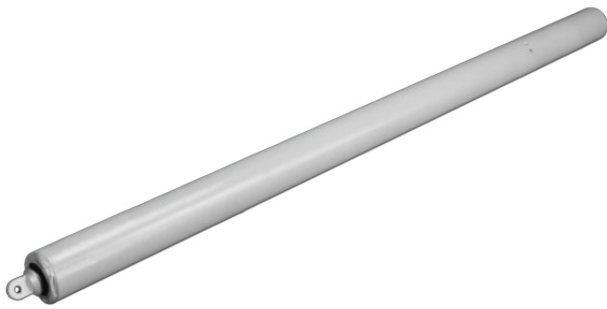
ARTICLE LIST

Part no.	Matchcode
M2 1701	EA-L-500/300-02
M2 1701 S	EA-L-500/300-S
M2 1702	EA-L-500/500-02
M2 1702 S	EA-L-500/500-S
M2 1703	EA-L-500/750-02
M2 1703 S	EA-L-500/750-S
M2 1704	EA-L-500/1000-02
M2 1704 S	EA-L-500/1000-S
M2 1710	EA-L-1000/500-02
M2 1710 S	EA-L-1000/500-S
M2 1711	EA-L-1000/1000-02
M2 1711 S	EA-L-1000/1000-S
M2 1712	EA-L-1000/300-02
M2 1712 S	EA-L-1000/300-S
M2 1713	EA-L-1000/750-02
M2 1713 S	EA-L-1000/750-S
M2 1743	EA-L-750/300-02
M2 1743 S	EA-L-750/300-S
M2 1744	EA-L-750/500-02
M2 1744 S	EA-L-750/500-S
M2 1745	EA-L-750/750-02
M2 1745 S	EA-L-750/750-S
M2 1746	EA-L-750/1000-02
M2 1746 S	EA-L-750/1000-S

EA-L 450 N Special actuator

Replacement for EA-ZAP

Part no.	Matchcode
M2 1005	EA-L-450/300
M2 1006	EA-L-450/500
M2 1007	EA-L-450/750
M2 1008	EA-L-450/1000



Technical Data



Input voltage	24 V DC
Nominal current	4 A
Stroke lengths	500 mm, 600 mm, 750 mm, 1000 mm
Max. Pull & Push Force	1000 N - 1800 N
Running speed	12.5 mm/s
IP Code	IP54
Switch on duration	30

TECHNICAL DATA

Matchcode	EA-L-100-180
Product name	Linear actuator EA-L-100-180 for heavy loads
Features	Tandem RWA VENT Eingang 24 VDC NRWG tauglich
Input voltage	24 V DC
Nominal current	4 A
Input voltage range	- 15 % / + 15 %
Stroke lengths	500 mm, 600 mm, 750 mm, 1000 mm
Max. Pull & Push Force	1000 N - 1800 N
Cut-Off	external electronic overload cut-off
Running speed	12.5 mm/s
IP Code	IP54
Switch on duration	30
Environment temperature range	-5 °C - 75 °C
Mounting way	aufgesetzt
Housing	aluminum tube, RAL 9006 coated, with integrated fixing point for flexible bracket system, length: 416 mm + stroke
Connections	silicone cable 5 x 0.75 mm ² , light grey, length 2,500 mm

ARTICLE LIST

Part no.	Matchcode
M2 1756 T	EA-L-100-180/500-T
M2 1757 T	EA-L-100-180/600-T
M2 1758 T	EA-L-100-180/750-T
M2 1759 T	EA-L-100-180/1000-T



Technical Data



Input voltage	24 V DC
Nominal current	0.95 A
Stroke lengths	120 mm
Max. Pull & Push Force	1000 N
Running speed	6 mm/s
IP Code	IP54
Switch on duration	30

TECHNICAL DATA

Matchcode	EA-L-120
Product name	Linear actuator EA-L-120
Features	Tandem Synchro RWA VENT Eingang 24 VDC NRWG tauglich
Input voltage	24 V DC
Nominal current	0.95 A
Input voltage range	- 20 % / + 25 %
Stroke lengths	120 mm
Max. Pull & Push Force	1000 N
Cut-Off	Integrated electronic overload cut-off and potential switch-over "F", electronic limit cut-off, optional synchronization switch-off, integrated safety cut-off, up to 4 actuators can be switched in parallel
Running speed	6 mm/s
IP Code	IP54
Switch on duration	30
Environment temperature range	-5 °C - 75 °C
Weight	3 kg
Mounting way	aufgesetzt
Housing	Aluminium special section tube, anodized E6/EV1 with integrated mount for flexible bracket system, length: 420 mm + 20 mm (cable gland), spindle with blind hole thread M10 for on-site connection
Connections	silicon cable 3 x 0,75 mm ² , light grey (5 x 0,75 mm ² for synchro version) The length of the connection cable is 3000 mm.

ARTICLE LIST

Part no.	Matchcode
M2 1434	EA-L-1000/120-02
M2 1434 S	EA-L-1000/120-S



Technical Data



Input voltage	24 V DC
Nominal current	1.2 A
Stroke lengths	285 mm, 485 mm, 735 mm
Max. Pull & Push Force	500 N, 750 N
Running speed	8.4 mm/s
IP Code	IP20
Switch on duration	30

TECHNICAL DATA

Matchcode	EA-L/S
Product name	slit actuator EA-L/S
Features	3 Jahre Garantie Synchro RWA VENT Eingang 24 VDC NRWG tauglich
Input voltage	24 V DC
Nominal current	1.2 A
Stroke lengths	285 mm, 485 mm, 735 mm
Max. Pull & Push Force	500 N, 750 N
Cut-Off	integrated electronic overload cut-off and potential sequence "F", electronic limit cut-off, integrated safety cut-off, up to 4 actuators switchable in parallel
Running speed	8.4 mm/s
IP Code	IP20
Switch on duration	30
Environment temperature range	-5 °C - 75 °C
Weight	approx. 3 kg
Mounting way	aufgesetzt
Housing	persistent aluminium special section tube, anodized E6/EV1 with integrated fixing point for flexible bracket system, length: 284 mm + stroke + 20 mm (screwed cable gland)
Connections	silicon cable 3 x 0,75 mm ² , light grey (5 x 0,75 mm ² for synchro version) The length of the connection cable is 3000 mm.

ARTICLE LIST

Stroke 185 mm

Part no.	Matchcode
M2 1739	EA-L/S-500/200-02
M2 1739 S	EA-L/S-500/200-S

Stroke 285 mm

Part no.	Matchcode
M2 1735	EA-L/S-500/300-02
M2 1735 S	EA-L/S-500/300-S
M2 1765	EA-L/S-750/300-02
M2 1765 S	EA-L/S-750/300-S

Stroke 485 mm

Part no.	Matchcode
M2 1736	EA-L/S-500/500-02
M2 1736 S	EA-L/S-500/500-S
M2 1766	EA-L/S-750/500-02
M2 1766 S	EA-L/S-750/500-S

Stroke 735 mm

Part no.	Matchcode
M2 1742	EA-L/S-500/750-02
M2 1742 S	EA-L/S-500/750-S
M2 1767	EA-L/S-750/750-02
M2 1767 S	EA-L/S-750/750-S



Technical Data



Input voltage	24 V DC
Nominal current	1.2 A
Stroke lengths	185 mm, 285 mm
Max. Pull & Push Force	500 N, 750 N
Running speed	8.4 mm/s
IP Code	IP20
Switch on duration	30

TECHNICAL DATA

Matchcode	EA-L/S-A
Product name	Slit actuator EA-L/S-A
Features	3 Jahre Garantie Synchro RWA VENT Eingang 24 VDC NRWG tauglich
Input voltage	24 V DC
Nominal current	1.2 A
Stroke lengths	185 mm, 285 mm
Max. Pull & Push Force	500 N, 750 N
Cut-Off	integrated electronic overload cut-off and potential switch-over "F", electronic limit switch-off, integrated safety switch-off, up to 4 actuators switchable in parallel
Running speed	8.4 mm/s
IP Code	IP20
Switch on duration	30
Environment temperature range	-5 °C - 75 °C
Weight	approx. 3 kg
Mounting way	aufgesetzt
Housing	persistent aluminium special section tube, anodized E6/EV1 with integrated fixing point for flexible bracket system, length: 284 mm + stroke + 20 mm (screwed cable gland)
Connections	silicon cable 3 x 0,75 mm ² , light grey (5 x 0,75 mm ² for synchro version), length 3,000 mm

ARTICLE LIST

Stroke 185 mm

Part no.	Matchcode	
M2 1761	EA-L/S-A-500/200-02	
M2 1761 S	EA-L/S-A-500/200-S	
M2 1763	EA-L/S-A-750/200-02	
M2 1763 S	EA-L/S-A-750/200-S	

Stroke 285 mm

Part no.	Matchcode	
M2 1760	EA-L/S-A-500/300-02	
M2 1760 S	EA-L/S-A-500/300-S	
M2 1762	EA-L/S-A-750/300-02	
M2 1762 S	EA-L/S-A-750/300-S	



Technical Data



Input voltage	24 V DC
Nominal current	1 A
Stroke lengths	48 mm
Max. Pull & Push Force	1000 N
Running speed	6 mm/s
IP Code	IP20, IP52 integrated
Switch on duration	30

MOUNTING POSITIONS



TECHNICAL DATA

Matchcode	EA-L/S-1000/48
Product name	Slit actuator EA-L/S-1000/48
Features	3 Jahre Garantie Synchro RWA VENT Eingang 24 VDC NRWG tauglich
Input voltage	24 V DC
Nominal current	1 A
Input voltage range	- 20 % / + 20 %
Stroke lengths	48 mm
Max. Pull & Push Force	1000 N
Cut-Off	Integrated electronic overload cut-off and potential switch-over "F", electronic limit switch-off, optional synchronization switch-off, integrated safety switch-off, up to 4 drives can be switched in parallel
Running speed	6 mm/s
IP Code	IP20, IP52 integrated
Switch on duration	30
Environment temperature range	-5 °C - 40 °C
Weight	approx. 2.5 kg
Mounting way	aufgesetzt
Housing	persistent aluminium special section tube, anodized E6/EV1, length: 351 mm + stroke + 20 mm (screwed cable gland)
Connections	silicone cable 3 x 0.75 mm ² , light grey (5 x 0.75 mm ² for synchro version), length 2,000 mm

ARTICLE LIST

Part no.	Matchcode
M2 1740	EA-L/S-1000/48-02
M2 1740 S	EA-L/S-1000/48-S



Technical Data



Input voltage	230 V AC
Nominal current	0.7 A
Stroke lengths	300 mm, 500 mm
Max. Pull & Push Force	300 N
Running speed	20 mm/s
IP Code	IP65
Switch on duration	10

TECHNICAL DATA

Matchcode	EA-SU-230/300
Product name	Spindle actuator EA-SU-230/300
Features	VENT Eingang 230 VAC
Input voltage	230 V AC
Nominal current	0.7 A
Stroke lengths	300 mm, 500 mm
Max. Pull & Push Force	300 N
Cut-Off	integrated limit switch, thermal protection
Running speed	20 mm/s
IP Code	IP65
Switch on duration	10
Weight	approx. 3 kg
Mounting way	aufgesetzt
Housing	aluminium anodized, 413 resp. 613 x 74 x 85 mm
Connections	plastic cable (4-wire), black, length 1,000 mm

ARTICLE LIST

Part no.	Matchcode
M2 1220	EA-SU-230/300/300
M2 1221	EA-SU-230/300/500



Technical Data



Input voltage	24 V DC
Nominal current	1 A
Stroke lengths	350 mm, 550 mm, 750 mm, 1000 mm
Max. Pull & Push Force	800 N
Running speed	9 mm/s
IP Code	IP55
Switch on duration	20

TECHNICAL DATA

Matchcode	EA-SZ
Product name	Rack and pinion actuator EA-SZ
Features	Synchro RWA VENT Eingang 24 VDC NRWG tauglich
Input voltage	24 V DC
Nominal current	1 A
Stroke lengths	350 mm, 550 mm, 750 mm, 1000 mm
Max. Pull & Push Force	800 N
Cut-Off	integrated electronic overload cut-off and sequence signal
Running speed	9 mm/s
IP Code	IP55
Switch on duration	20
Environment temperature range	-10 °C - 60 °C
Weight	approx. 3 kg
Mounting way	aufgesetzt
Housing	gear rack housing: anodized aluminium E6/EV1, grey, actuators housing: plastic, stroke + 220 mm x 54 x 120 mm
Connections	silicon cable 3 x 0,75 mm ² , light grey, length 1500 mm

ARTICLE LIST

Part no.	Matchcode
M2 1080	EA-SZ 24/80/350
M2 1081	EA-SZ 24/80/550
M2 1082	EA-SZ 24/80/750
M2 1090	EA-SZ 24/80/1000
M2 1096	EA-SZ-24/50/750-LO

[M2 1097](#)

[EA-SZ-24/50/1000-LO](#)



Technical Data



Input voltage	230 V AC
Nominal current	0.22 A
Stroke lengths	350 mm, 550 mm, 750 mm, 1000 mm
Max. Pull & Push Force	650 N
Running speed	9 mm/s
IP Code	IP55
Switch on duration	20

TECHNICAL DATA

Matchcode	EA-SZ 230 VAC
Product name	Rack and pinion actuator EA-SZ 230 V
Features	Synchro RWA VENT Eingang 230 VAC
Input voltage	230 V AC
Nominal current	0.22 A
Stroke lengths	350 mm, 550 mm, 750 mm, 1000 mm
Max. Pull & Push Force	650 N
Cut-Off	integrated electronic overload cut-off
Running speed	9 mm/s
IP Code	IP55
Switch on duration	20
Environment temperature range	-10 °C - 60 °C
Weight	approx. 3 kg
Mounting way	aufgesetzt
Housing	gear rack housing: anodized aluminium E6/EV1, grey, actuators housing: plastic, stroke + 220 mm x 54 x 120 mm
Connections	silicon cable 4 x 0,75 mm ² , white, length 1500 mm

ARTICLE LIST

Part no.	Matchcode
M2 1080 A	EA-SZ 230/65/350
M2 1081 A	EA-SZ 230/65/550
M2 1082 A	EA-SZ 230/65/750
M2 1090 A	EA-SZ 230/65/1000

Technical Data



TECHNICAL DATA

Matchcode	Zubehör Linearantrieb
Product name	Accessories linear actuator
Features	RWA VENT
Mounting way	aufgesetzt

ARTICLE LIST

Accessories linear actuator EA-L

Part no.	Matchcode
K2 1501	OK
K2 1502	DAS
K2 1505 A	UKU-740
K2 1506	AW 100-6
K2 1506 A	AW 100-6-A
K2 1507 A	AW 150-6
K2 1507 B	AW 150-6-A
K2 1519 A	AW 250-6
K2 1539	HK-L
K2 1562	UK-L
K2 1563	K-L-UK-J
K2 1576	K-L-RAICO105D-RE-9006 (rechts)
K2 1577	K-L-RAICO105D-LI-9006 (links)
K2 1601	K-L-A-LI-AW57RO
K2 1603	K-L-A-RE-AW57RO

Accessories heavy duty actuator EA-L 100-180

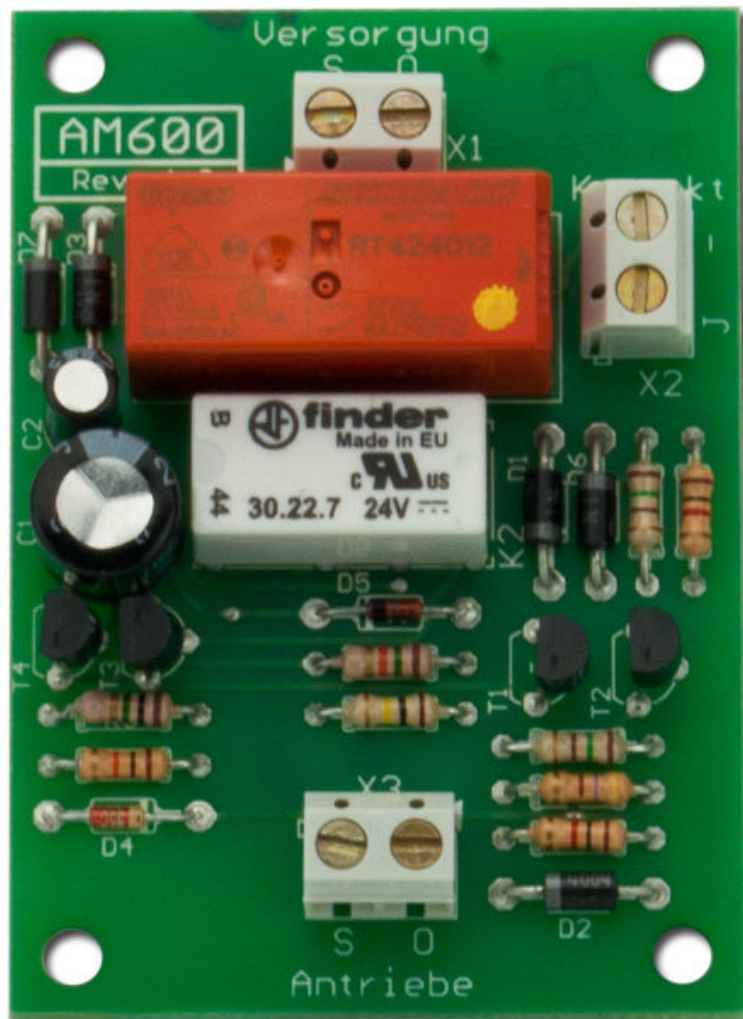
Part no.	Matchcode
K2 1501 B	OK-1500

[K2 1585](#)[K-L-100-KLR-MB](#)**Accessories EA-L 120**

Part no.	Matchcode
M2 1429 A	KA-EA-L-***/***-M
M2 1429 B	KA-EA-L-***/***-S

Accessories EA-SZ

Part no.	Matchcode
M2 1083	EA-SZ-M-350
M2 1083 A	EA-SZ-VERBIND-1
M2 1083 B	EA-SZ-VERBIND-2
M2 1084	EA-SZ-M-550
M2 1089	EA-SZ-M-750
M2 1091	EA-SZ-M-1000



Technical Data



TECHNICAL DATA

Matchcode	AM-600
Product name	Safety shutdown AM-600
Features	RWA
Housing	Surface housing

ARTICLE LIST

Part no.	Matchcode
M2 3140	Safety shutdown AM-600







Technical Data



Input voltage	230 V AC
Output voltage	24 V DC
Output current	3 A / 6 A

TECHNICAL DATA

Matchcode	SHEV
Product name	SHEV Compact control unit
Features	RWA VENT
Input voltage	230 V AC
Output voltage	24 V DC
Output current	3 A / 6 A
LED signs	ready, error, smoke exhaust system triggered
Environment temperature range	-5 °C - 40 °C
Mounting way	aufgesetzt
Housing	Plastic housing / steel-sheet housing RAL 9010
Connections	smoke extraction button: 1 main and 7 secondary SHE-button (type HE-075, HE-0,76), ventilation button (type DT, ST), thermo detector (type TH 70 Ö, TH 4860), smoke detector (type RM-3000, RM-2860), wind/rain detector (type WTS-892, WT-890), potential-free external actuation

ARTICLE LIST

Part no.	Matchcode
ST4 3140	SHEV 3
ST4 3141	SHEV 6
ST4 3143	SHEV 3 UP
ST4 3146	SHEV 3 AP
ST4 3151	SHEV 6 AP
ST4 3153	SHEV 602
ST4 3160	SP-300
ST4 3161	SP-600
ST4 3166	SHEV 2 HM
ST4 3168	SHEV 2 ECO
ST4 3177	SP-300-AP
ST4 3191	SP-600-AP



Technical Data



Input voltage	230 V AC
Output voltage	24 V DC
Output current	3 A / 6 A

TECHNICAL DATA

Matchcode	VENT-3/6
Product name	VENT-3/6 Ventilation control unit
Features	Simon Link VENT
Input voltage	230 V AC
Output voltage	24 V DC
Output current	3 A / 6 A
IP Code	IP20
Switch on duration	30
Environment temperature range	-5 °C - 40 °C
Weight	max. 6.3 kg
Mounting way	aufgesetzt
Housing	sheet steel housing 301 x 323 x 85 mm (WxHxD) in RAL 9010

ARTICLE LIST

Part no.	Matchcode
ST4 4030	VENT-3
ST4 4031	VENT-6



Technical Data



Input voltage	230 V AC
Output voltage	230 V DC
Output current	6 A

TECHNICAL DATA

Matchcode	VENT-61-AP
Product name	VENT-61-AP Ventilation control unit
Features	VENT
Input voltage	230 V AC
Output voltage	230 V DC
Output current	6 A
IP Code	IP20
Environment temperature range	-5 °C - 50 °C
Weight	approx. 1.5 kg
Mounting way	aufgesetzt
Housing	steel-sheet housing (313 mm x 139 mm x 65 mm), in RAL 9010 coated

ARTICLE LIST

Part no.	Matchcode
ST4 4036	VENT-61-AP
St4 4037	VENT-61-AP-FT

Technical Data



Input voltage	230 V AC
Output voltage	24 V DC
Output current	3 A / 6 A

TECHNICAL DATA

Matchcode	AP-N 3/6
Product name	AP-N 3/6 Ventilation control unit
Features	VENT
Input voltage	230 V AC
Output voltage	24 V DC
Output current	3 A / 6 A
IP Code	IP20
Environment temperature range	-20 °C - 70 °C
Weight	1.7 kg
Mounting way	aufgesetzt
Housing	sheet steel housing RAL 9010

ARTICLE LIST

Part no.	Matchcode
ST4 3220	AP-N-3
ST4 3221	AP-N-6



Technical Data



TECHNICAL DATA

Matchcode	Zubehör Kompaktzentrale
Product name	Accessories compact control unit
Features	RWA VENT

ARTICLE LIST

Part no.	Matchcode
ST4 10104	NC-2406-TK
ST4 10104 A	NC-2406-LÖ
ST4 10105	NC-2406
ST4 10106	NC-2412
ST4 10130	SHEV-3(6)-Akkupack-2,3Ah
ST4 10131	SHEV-3-AP-Akkupack-2,3Ah
ST4 10132	SHEV-6-AP-Akkupack-2,3Ah





Technical Data



Input voltage	230 V AC
Output voltage	24 V DC

TECHNICAL DATA

Matchcode	M-SHEV
Product name	Modular control panel M-SHEV
Features	Simon Link RWA VENT
Input voltage	230 V AC
Output voltage	24 V DC

ARTICLE LIST

Modular control panel steel case housing

Part no.	Matchcode
ST4 3437	M-SHEV-12-AP-ECO
ST4 3439	M-SHEV-24/1-2-ECO
ST4 3445	M-SHEV-12
ST4 3447	M-SHEV-24
ST4 3449	M-SHEV-48
ST4 3451	M-SHEV-72
ST4 3453	M-SHEV-96
ST4 3460	M-SHEV-12-AP



Technical Data



Input voltage	230 V AC
Output voltage	24 V DC

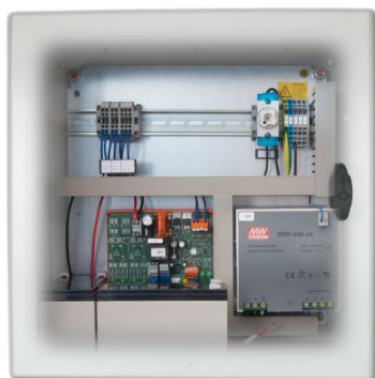
TECHNICAL DATA

Matchcode	M-VENT
Product name	Modular ventilation control panel M-VENT
Features	Simon Link VENT
Input voltage	230 V AC
Output voltage	24 V DC
LED signs	white: WTS; yellow: failure; green: OK
IP Code	IP20 / IP66
Environment temperature range	-5 °C to 60 °C

ARTICLE LIST

Part no.	Matchcode
ST4 4040	M-VENT-5-AP
ST4 4041	M-VENT-10-AP (2 FMU)
ST4 4041 XL	M-VENT-10-AP (6 FME)
ST4 4042	M-VENT-20-AP
ST4 4043	M-VENT-5-S
St4 4044	M-VENT-10-S
ST4 4045	M-VENT-20-S
ST4 4046	M-VENT-40-S

Technical Data



TECHNICAL DATA

Matchcode	AEV
Product name	Alternative energy supply AEV

ARTICLE LIST

Part no.	Matchcode
ST4 3325	Alternative energy supply AEV-10
ST4 3326	alternative-energy-supply-aev-24
ST4 3327	alternative-energy-supply AEV-48
ST4 3328	alternative-energy-supply AEV-72



Technical Data



Output voltage

230 V AC

TECHNICAL DATA

Matchcode	Zubehör Modulzentrale
Product name	Accessories modular control unit
Features	RWA VENT
Output voltage	230 V AC

ARTICLE LIST

Part no.	Matchcode
ST4 3344	HR-820-MS
ST4 3372	LI-048-12
ST4 3373	LI-048-24
ST4 3374	LI-048-48
Part no.	Matchcode
ST4 3380	ZI-100
ST4 3381	SI-100
ST4 3382	MI-100
ST4 3383	MR-120
Part no.	Matchcode
ST4 3385	MI-100-MB
ST4 3386	SI-100-MASTER
ST4 3389	BI-100-KNX

Spare rechargeable batteries for modular control p

Part no.	Matchcode
ST4 10120	Pb-battery-7Ah
ST4 10121	pb-battery-12ah
ST4 10122	pb-battery-17ah
ST4 10123	pb-battery-24ah
ST4 10124	Pb battery 38 Ah

Charging batteries for modular control panels

Part no.	Matchcode
ST4 3361	Charge electronics, type LB-120
ST4 3362	Charge electronics, type LB-140
ST4 3363	Charge electronics, type LB-160
ST4 3369	Charge electronics, type LB-120-10

Housing accessories for modular control panels

Part no.	Matchcode
ST4 3321	Flange plate 445-130 plastic
ST4 3322	Flange plate 345-130 plastic
ST4 3323	Flange plate 545-130 plastic
ST4 33516	AP-MOUNT



Technical Data



TECHNICAL DATA

Matchcode	Zubehör Rauch-Differenzdruck-Steuerung
Product name	Smoke Differential Pressure Control Unit
Features	RWA VENT

ARTICLE LIST

Part no.	Matchcode
ST4 3205	RDA-230
ST4 3206	RDA-400
ST4 3210	DDS-10/50







Technical Data



Input voltage

24 V DC

TECHNICAL DATA

Matchcode	Elektrische Handansteuereinrichtung
Product name	Emergency Override Switches
Features	RWA
Input voltage	24 V DC
Weight	approx. 0,25 kg
Mounting way	aufgesetzt
Housing	surface mounting plastics unit according to DIN 14655/DIN EN 12101/9/125 x 125 x 35 mm optionally installed in a in-wall mounted housing: with revolving door, security glass and key

ARTICLE LIST

Part no.	Matchcode
A3 2130	HE 080 Orange
A3 2131	HE 080 Yellow
A3 2132	HE 080 Grey
A3 2133	HE 080 Blue
A3 2140	HE 081 Orange
A3 2141	HE 081 Yellow
A3 2142	HE 081 Grey
A3 2143	HE 081 Blue
A3 2150	HE 082 Orange
A3 2151	HE 082 Yellow
A3 2152	HE 082 Blau
A3 2153	HE 082 Blue
A3 2160	HE 083 Orange
A3 2161	HE 083 Yellow
A3 2170	HE 086 Orange
A3 2171	HE 086 Grey
A3 2172	HE 086 Yellow

[A3 2175](#)

[HE 087 Orange](#)

[A3 2176](#)

[HE 087 Yellow](#)

[A3 2177](#)

[HE 087 grey](#)



Technical Data



LED signs

red = alarm

TECHNICAL DATA

Matchcode	RM
Product name	Optical Smoke detector
Features	RWA
LED signs	red = alarm
IP Code	IP43
Weight	approx. 0,1 kg
Mounting way	aufgesetzt
Housing	plastic ABS, RAL 9010 (white), 100 x 44 mm, detector incl. mounting base

ARTICLE LIST

Part no.	Matchcode
A3 2053	RM 2860
A3 2062	RM 3000



Technical Data



LED signs

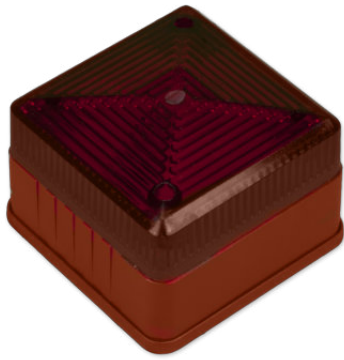
red = alarm

TECHNICAL DATA

Matchcode	TH-4860
Product name	Heat Detector TH-4860
Features	RWA
LED signs	red = alarm
IP Code	IP43
Weight	approx. 0,5 kg
Mounting way	aufgesetzt
Housing	Plastic ABS, RAL 9010 (white), 100 x 58 mm, detector incl. mounting base

ARTICLE LIST

Part no.	Matchcode
A3 2080	TH-4860



Technical Data



TECHNICAL DATA

Matchcode	Alarmanzeigen
Product name	Alarm indicator
Features	RWA
Weight	approx. 0,5 kg
Mounting way	aufgesetzt
Housing	plastics, red

ARTICLE LIST

Part no.	Matchcode
A3 2084	BI-24

Acoustic Alarmmelder, type S-24

Part no.	Matchcode
A3 2082	S-24-ROT
A3 2083	S-24-WEISS



Technical Data



TECHNICAL DATA

Matchcode	Feuerwehrbedientaster
Product name	Firemans Override
Features	RWA
Housing	Surface-mounted plastic housing 125 x 125 x 40 mm RAL 2011 (orange)

ARTICLE LIST

Part no.	Matchcode
A3 2180	FBT-ORANGE-DE
A3 2181	FBT-ORANGE-EN



Technical Data



TECHNICAL DATA

Matchcode	Zubehör Elektrische Handansteuereinrichtung
Product name	Accessories Emergency Override Switches
Features	RWA VENT
Housing	gear rack housing: anodized aluminium E6/EV1, grey, actuators housing: plastic, stroke + 220 mm x 54 x 120 mm

ARTICLE LIST

circuit boards for HE/FTZ

Part no.	Matchcode
A3 10035	HE 080
A3 10045	HE 081
A3 10055	HE 082

Housing for HE and FTZ

Part no.	Matchcode
A3 2001 A	HE 07X/-08X Yellow
A3 2002 A	HE 07X/-08X Blue
A3 2003 A	HE 07X/-08X Grey
A3 2005 A	HE 07X/-08X Orange
A3 2106	HE-UP-VA

Spare key

Part no.	Matchcode
E 10019	DINSCHL

Spare slices

Part no.	Matchcode
----------	-----------

[E 10014](#)

[DINS](#)

[E 10017](#)

[SCHEIBE/RUND](#)

Technical Data



TECHNICAL DATA

Matchcode	Zubehör Streulicht-Rauchmelder RM-3000
Product name	Accessories Optical Smoke detector
Features	RWA

ARTICLE LIST

Part no.	Matchcode
A3 2057	RM/SCHUTZ
A3 2063	RMS-3000

Test gas for smoke detector

Part no.	Matchcode
A3 2058	PG
A3 2058 A	PG/RM 2860
A3 2058 B	PG/RM 3000



Technical Data



TECHNICAL DATA

Matchcode	Lüftertaster
Product name	Ventilation button
Features	RWA VENT
Mounting way	aufgesetzt
Housing	plastic housing

ARTICLE LIST

Part no.	Matchcode
A3 4503	DT/AP/W
A3 4525	DT/UP-ALPIN
A3 4525 NS	DT/UP-NS-ALPIN
A3 4526	DT/AP-ALPIN
A3 4526 NS	DT/AP-NS-ALPIN
A3 4527	ST/UP-ALPIN
A3 4527 NS	ST/UP-NS-ALPIN
A3 4528	ST/AP-ALPIN
A3 4528 NS	ST/AP-NS-ALPIN

Ventilation button type DT

Part no.	Matchcode
A3 4573	DT/AP/R



Technical Data



TECHNICAL DATA

Matchcode	Wind-/Regenmelder
Product name	Wind-rain-detector
Features	3 Jahre Garantie RWA VENT
IP Code	IP65
Environment temperature range	-20 °C - +85 °C
Weight	approx. 0.5 kg
Mounting way	aufgesetzt
Housing	WTS-892: plastic ABS, light grey similar RAL 7035, 190 x 100 x 150 mm WS-890: plastic ABS, light grey similar RAL 7035, 190 x 80 x 62 mm

ARTICLE LIST

Part no.	Matchcode
A3 4566	WS-890
A3 4568	WTS-892

Technical Data



TECHNICAL DATA

Matchcode	Thermo-Hygrostat
Product name	Thermo-/Humidistat
Features	RWA VENT
IP Code	IP65
Mounting way	aufgesetzt
Housing	Housing ABS, light grey, WTS-892: 190 x 100 x 150, WS-890: 190 x 80 x 62

ARTICLE LIST

Part no.	Matchcode
A3 4551	TH 0/30
A3 4552	TH 0/30 S
A3 4554	TH 0/60
A3 4571	HYG 35-100%



Technical Data



TECHNICAL DATA

Matchcode	Zubehör Wind-/Regenmelder
Product name	Accessories wind rain detector
Features	RWA VENT

ARTICLE LIST

Part no.	Matchcode
A3 4569	MS 2



Technical Data

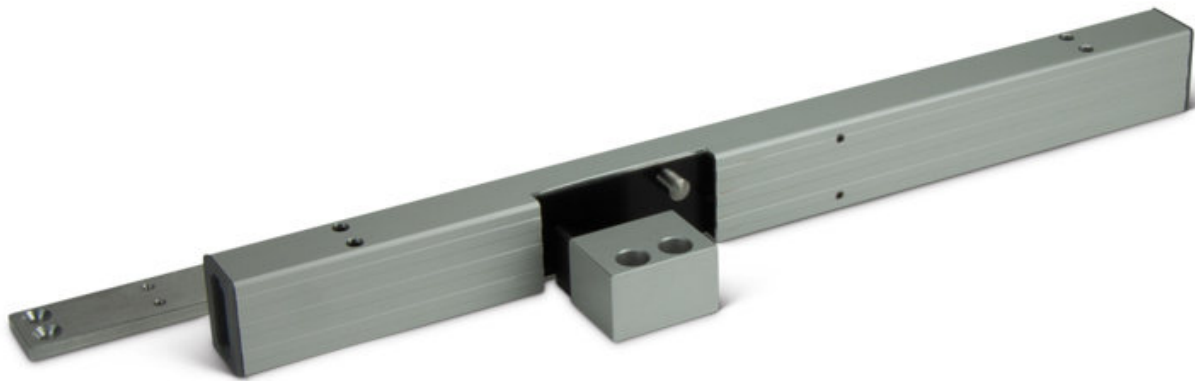


TECHNICAL DATA

Matchcode	Zubehör Thermostat
Product name	Accessories Thermostat
Features	RWA VENT

ARTICLE LIST

Part no.	Matchcode
ST4 3366	THM-100
ST4 3368	THM-200





Technical Data



Input voltage	24 V DC
Nominal current	0.095 A
Running speed	15 s
Switch on duration	30

TECHNICAL DATA

Matchcode	PA-ZV-UNI
Product name	Supplementary electric locking PA-ZV-UNI
Features	3 Jahre Garantie RWA VENT Eingang 24 VDC NRWG tauglich
Input voltage	24 V DC
Nominal current	0.095 A
Ripple	500
Cut-Off	- integrated electronic overload cut-off - Overload protection: electronic - Max. switching current of all sequence actuators: 6 A - Switching time sequence control: approx. 2 seconds.
Running speed	15 s
IP Code	IP40
Switch on duration	30
Environment temperature range	0 °C - 75 °C
Weight	0.9 kg
Mounting way	aufgesetzt
Housing	Aluminum E6/EV1, 385 x 25 x 35 mm
Connections	SICO PLUG

ARTICLE LIST

Part no.	Matchcode
B5 6108	PA-ZV-UNI



Technical Data



Input voltage	24 V DC
Nominal current	1.1 A
Stroke lengths	18 mm, 36 mm
Switch on duration	30

TECHNICAL DATA

Matchcode	ZVK-LOCK
Product name	Supplementary electric locking ZVK-LOCK
Features	RWA VENT Eingang 24 VDC
Input voltage	24 V DC
Nominal current	1.1 A
Input voltage range	- 15 % / + 15 %
Ripple	500
Stroke lengths	18 mm, 36 mm
Cut-Off	built-in electronic overload cut-off Overload protection: electronic Max. switching current of follower actuators: 6 A
IP Code	IP32 (Type -I) / IP10 (Type -A)
Switch on duration	30
Environment temperature range	-5 °C - +70 °C
Weight	0.47 kg
Housing	Aluminium 377 × 26 × 26 mm
Connections	5-pin plug without connection cable

ARTICLE LIST

Part no.	Matchcode
B5 6140	ZVK-LOCK-I
B5 6141	ZVK-LOCK-A



Technical Data



Input voltage	24 V DC
Nominal current	0.95 A
Switch on duration	30

TECHNICAL DATA

Matchcode	ZV-ELIMATIC
Product name	Supplementary electric locking ZV-ELIMATIC
Features	3 Jahre Garantie RWA VENT NRWG tauglich
Input voltage	24 V DC
Nominal current	0.95 A
Input voltage range	- 15 % / + 15 %
Ripple	500
Cut-Off	- integrated electronic overload cut-off - Max. switching current of all sequence actuators: 6 A - Switching time sequence control: approx. 3 seconds.
IP Code	IP32
Switch on duration	30
Environment temperature range	0 °C to +75 °C
Weight	0.9 kg
Mounting way	aufgesetzt
Housing	Aluminum E6/EV1, 266 x 50 x 41 mm (LxWxH)

ARTICLE LIST

Part no.	Matchcode
B5 6104	ZV-ELIMATIC-I
B5 6105	ZV-ELIMATIC-A



Technical Data

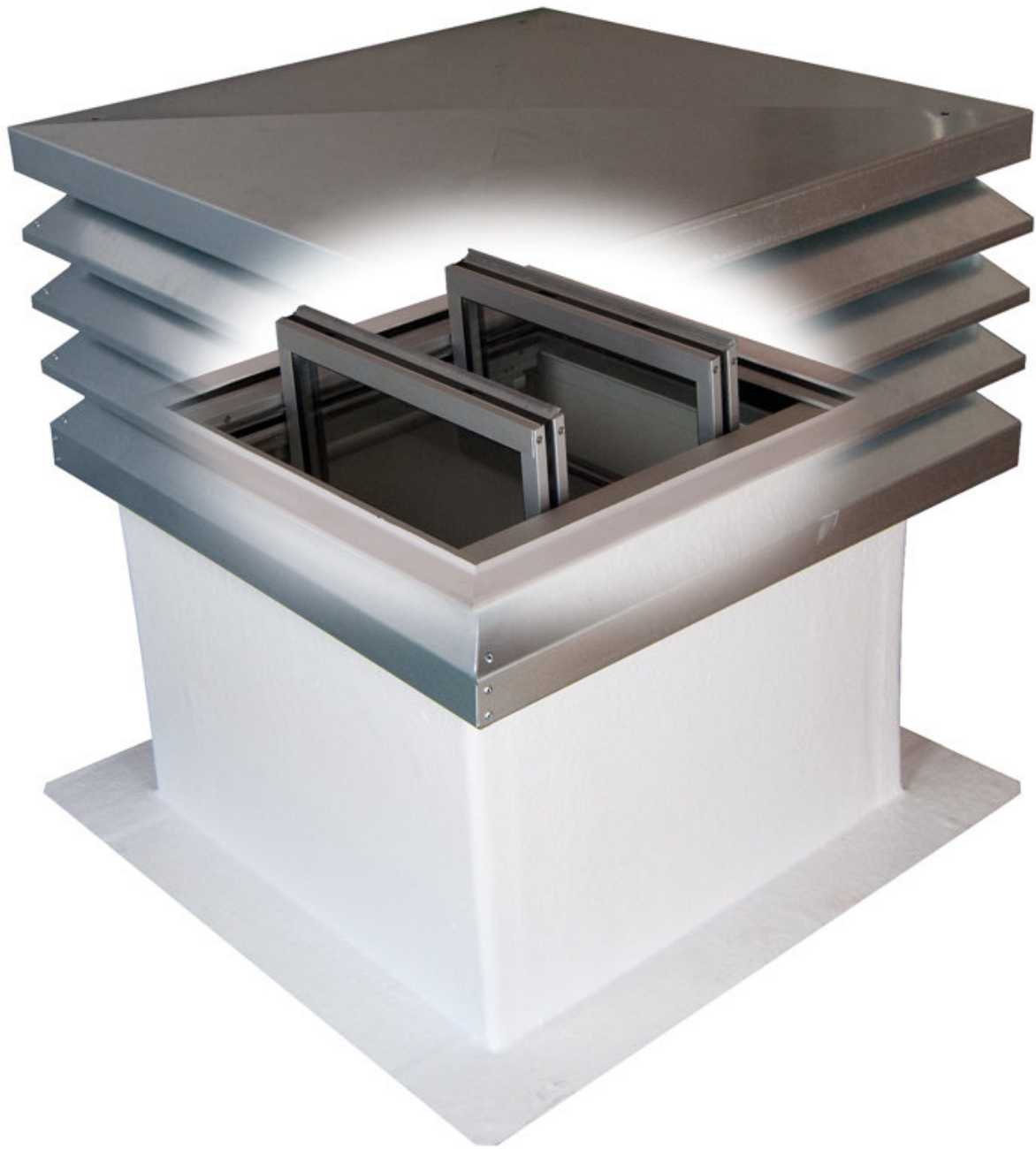


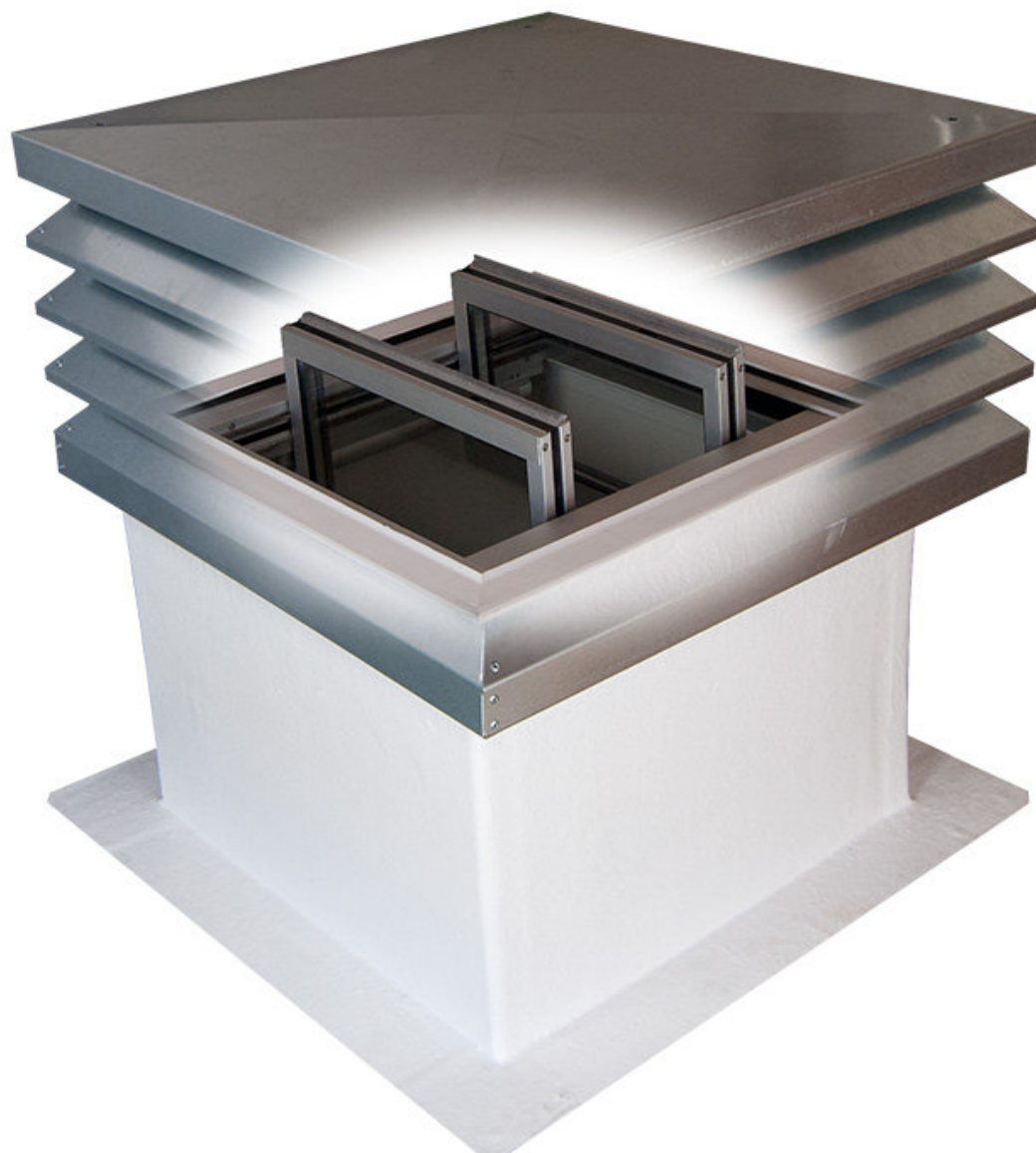
TECHNICAL DATA

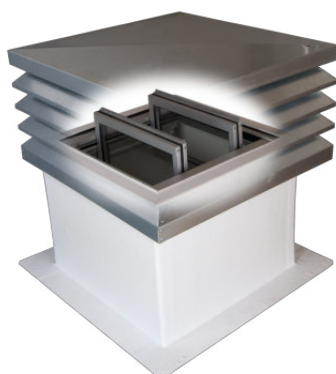
Matchcode	ZV-ELIMATIC
Product name	Zubehör ZV-ELIMATIC
Features	RWA VENT

ARTICLE LIST

Part no.	Matchcode
B5 6128	Z-ZV-Elimatic-Huelsenset







Technical Data



Input voltage	24 V DC
Nominal current	1 A
Stroke lengths	48 mm

TECHNICAL DATA

Matchcode	SHEV FLAP
Product name	Smoke-Extraction Flap SHEV FLAP
Features	RWA VENT
Input voltage	24 V DC
Nominal current	1 A
Stroke lengths	48 mm
Cut-Off	electronic overload cut-off
Environment temperature range	-5 °C - 40 °C
Weight	62-96 kg
Housing	material: GRP sheet metal blade galvanized insulation: 4 cm, PD, HTC value = 0.5

ARTICLE LIST

Part no.	Matchcode
M2 1790	SHEV Flap-S
M2 1791	SHEV Flap-M
M2 1792	SHEV Flap-L
M2 1795	SHEV Flap-Sonder



Technical Data



Input voltage

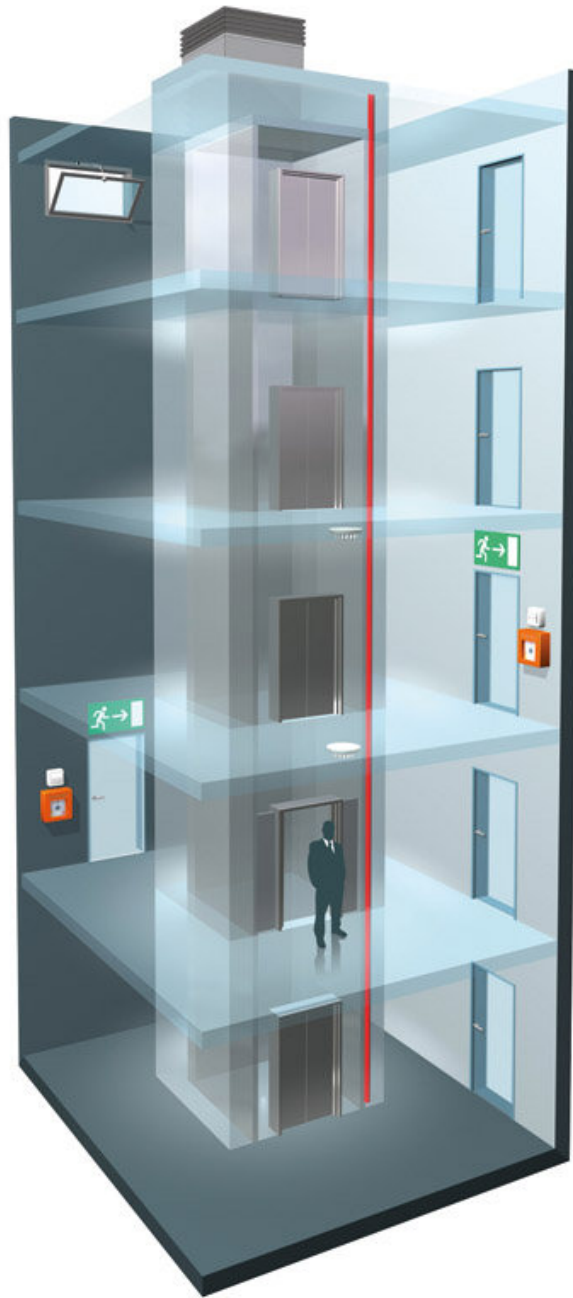
24 V DC

TECHNICAL DATA

Matchcode	Lamellenfenster
Product name	Louvre window
Features	RWA VENT
Input voltage	24 V DC

ARTICLE LIST

Part no.	Matchcode
M2_1020	Louvre window Hahn-S9-iVt
RWG_50110	Louvre window TG-24-SHEV





Technical Data



TECHNICAL DATA

Matchcode	LiSE mit abZ
Product name	LiSE with general approval
Features	RWA VENT

ARTICLE LIST

Part no.	Matchcode
A3 2501	SHEV pushbutton LiSE
A3 2502	Smoke detector LiSE
A3 2503	Multisensor LiSE
ST4 3230	Control unit LiSE

Technical Data



TECHNICAL DATA

Matchcode	SHEV-LIFT
Product name	SHEV-LIFT
Features	RWA VENT

ARTICLE LIST

Part no.	Matchcode
ST4 3175	SHEV 3 LIFT

sico





Technical Data

SICO



TECHNICAL DATA

Matchcode	SICO LINK
Product name	SICO LINK
Features	SICO

ARTICLE LIST

Part no.	Matchcode
SD1 8513	SICO-LINK-AK-USB-110

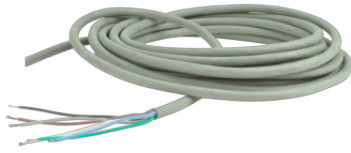
SICO LINK Software

Part no.	Matchcode
SD1 8500	SICO LINK Software bundle
SD1 8520	SICO LINK License extension
SD1 8530	Software Adjustment



Technical Data

SICO



TECHNICAL DATA

Matchcode	PA-Anschlussleitung
Product name	PA-Connection-Cable
Features	SICO
Input voltage	24 V DC

ARTICLE LIST

Part no.	Matchcode
K2 2003	PA-ANL-SIHF-6x0.75mm²
K2 2004	PA-ANL-3m
K2 2005	PA-ANL-5m
K2 2006	PA-ANL-+lfm
K2 2007	PA-SICO-SET-3m
K2 2008	PA-SICO-SET-5m
K2 2009	PA-SICO-SET-+lfm

Technical Data



TECHNICAL DATA

Matchcode	SICO PLUG
Product name	SICO PLUG

ARTICLE LIST

Part no.	Matchcode
K2 2001	SICO-PLUG
K2 2002	SICO-PLUG-SP
SD1 8514	SICO-PLUG-INSTALL

Allgemeine Geschäftsbedingungen, Softwareklausel sowie Regelung zur Rücknahme von Altgeräten/Batterien

Es gelten unsere Allgemeinen Geschäftsbedingungen, die Sie auf unserer Webseite einsehen können und wir Ihnen auf Anforderung auch gerne unentgeltlich jederzeit zur Verfügung stellen.

- Allgemeine Lieferbedingungen für Erzeugnisse und Leistungen der Elektroindustrie („Grüne Lieferbedingungen“ – GL)
- Softwareklausel für die Verwendung von SIMON PROtec Software

Information zur Entsorgung von Altgeräten/Batterien:

Der Besteller übernimmt die Pflicht, die gelieferte Ware nach Nutzungsbeendigung auf eigene Kosten nach den gesetzlichen Vorschriften ordnungsgemäß zu entsorgen und stellt den Lieferanten von den Verpflichtungen gemäß § 19 Abs. 1 Satz 1 ElektroG und damit im Zusammenhang stehenden Ansprüchen Dritter frei. Satz 1 gilt auch für in Elektro- und Elektronikgeräte eingebaute Altbatterien.

Alle Altbatterien sowie durch ausgelaufenes Material oder Feuer entstandener Abfall müssen in Übereinstimmung mit dem Umweltschutzgesetz, der Rechtsverordnung zur Sonderabfallsatzung 1996 und den Umweltschutzbestimmungen (Sorgfaltspflicht) 1991 entsorgt werden.

SIMON PROtec Systems ist als Hersteller unter folgender ID beim ear-Portal registriert: 97535049.

General Terms and Conditions (GTC), Software Clause as well as regulation for the return of old devices/batteries

Our General Terms and Conditions apply, which you can find on our website and which we will also be happy to provide to you free of charge at any time upon request.

- General Terms of Delivery for Products and Services of the Electrical Industry („Green Terms and Conditions of Delivery“ - GL)
- Software clause for the use of SIMON PROtec software

Information on the disposal of old devices/batteries:

The customer accepts the obligation to properly dispose the delivered goods after use at its own expense in accordance with the statutory regulations and releases the supplier from the regulations according to § 19 (1) sentence 1 ElektroG (German Electrical and Electronic Equipment Act) and related claims of third parties. Sentence 1 also applies to waste batteries installed in electrical and electronic equipment.

All old batteries and waste resulting from leakage or fire must be disposed of in accordance with the Environmental Protection Act, the Hazardous Waste Statutory Instrument 1996 and the Environmental Protection (Duty of Care) Regulations 1991.

SIMON PROtec Systems is registered as a manufacturer with the ear portal under the following ID: 97535049.



SIMON PROtec Systems GmbH
Medienstr. 8
94036 Passau
Tel: + 49 851 98870 – 0
Fax: + 43 851 98870 – 70
E-Mail: info@simon-protec.com
Internet: www.simon-protec.com



SIMON PROtec Deutschland GmbH
Frauenhoferstr. 14
82152 Planegg
Tel: + 49 89 79 170 11
Fax: + 43 89 79 179 72
E-Mail: info@simon-protec.de
Internet: www.simon-protec.de

Medienstr. 8
94036 Passau
Tel: + 49 851 379 368 – 0
Fax: + 43 851 379 368 – 70
E-Mail: info@simon-protec.de
Internet: www.simon-protec.de



SIMON PROtec Systems AG
Allmendstrasse 38
8320 Fehraltorf
Tel: + 41 44 956 50 30
Fax: + 41 44 956 50 40
E-Mail: info@simon-protec.ch
Internet: www.simon-protec.ch



SIMON PROtec Systems Kft.
Vezér ucta 147/D
1148 Budapest
Tel: + 36 30 552 0424
E-Mail: info@simon-protec.hu
Internet: www.simon-protec.hu